



# WPS Health Plan Group Health Insurance



What can you count on from WPS Health Plan?

# Personal service, plus top-quality coverage

You get health coverage you can understand  
to help you get the health care you need.

## In Wisconsin

### WPS Select Plus Network

Convenient access to many health care professional service  
locations and hospitals in your area.

More than

**7,000**

health care providers

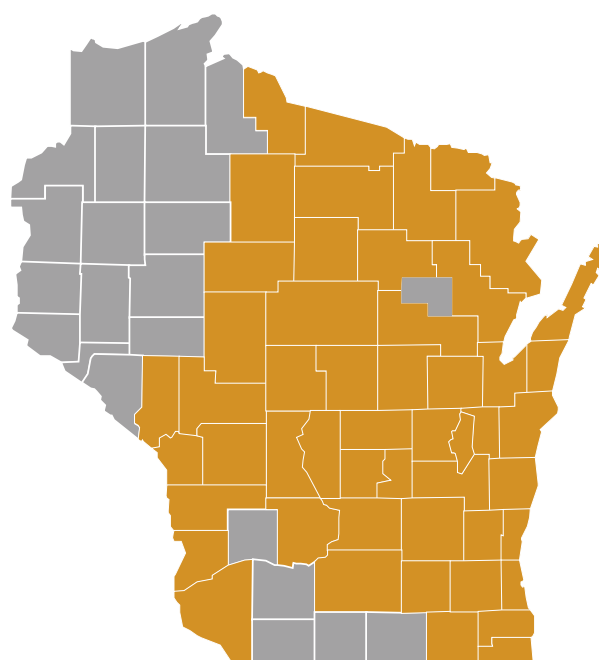
**49** hospitals

## Top providers

Get your medical care from respected health care providers.

- » Ascension SE\*
- » Aspirus Network, Inc.
- » Aurora Health Care
- » Bellin Health
- » Children's Hospital of Wisconsin
- » Gundersen Health System
- » Holy Family Memorial
- » ProHealth
- » Rogers Memorial Hospital
- » ThedaCare
- » University of Wisconsin Hospital and Clinics

\*Ascension providers are included in Milwaukee, Ozaukee, Racine, and Waukesha counties only.



 WPS Select Plus Network



**800-223-6029**  
Monday through Friday  
7:30 a.m.–5 p.m.



**WPS Health Plan**  
P.O. Box 11625  
Green Bay, WI 54307-1625



**For questions** about your coverage or claims, please log in to your customer account for secure communications.  
**[wpshealth.com/customers](http://wpshealth.com/customers)**

## Across the U.S.

### First Health Wrap

In-network benefits in all 49 states outside Wisconsin.

More than

**1 million**

health care service locations

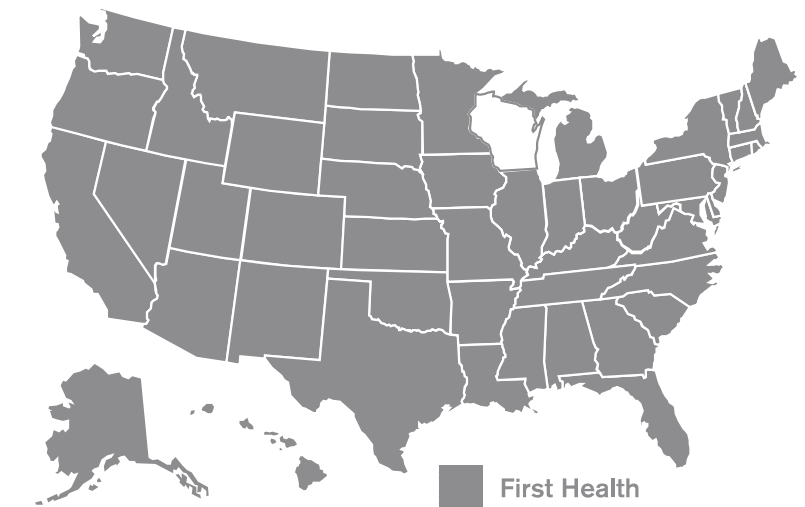
**5,000** hospitals

**90,000**

ancillary facilities

## Ideal for:

- » Customers who travel or whose children attend school out of state
- » Out-of-state employees needing in-network care



### Finding an in-network provider is easy!

Go to **[wpshealth.com/healthplan](http://wpshealth.com/healthplan)** and select **Find A Doctor**. On the next screen click on **Start Your Search** under the **WPS Health Plan** logo, and then choose **WPS Select Plus** from the drop-down menu. Current customers may log in by entering the group number located on your ID card.

For assistance locating an in-network provider, please call the number on your WPS Health Plan ID card, Monday–Friday from 7:30 a.m. to 5 p.m. CT. Providers can leave or enter the network at any time. It is recommended that you check the network status of your provider on a regular basis.



# Benefits for your health

## Covered preventive care

Group plans cover 100% of certain preventive services and medications when care is received from an in-network health care provider. Services received from an out-of-network provider are subject to out-of-pocket costs, such as copayments, deductibles, and coinsurance amounts or are not covered, depending on the health plan selected.

Covered services include:

- » Routine immunizations
- » Routine medical exams
- » Well-child care
- » Mammograms
- » Preventive screenings
- » Preventive drugs
- » Smoking cessation
- » Three **FREE** primary care visits per calendar year<sup>1</sup>

<sup>1</sup>Benefit does not apply to HSA-qualified HDHPs or nonstandard copay plans. Three free primary care visits may not apply to plans effective prior to Jan. 1, 2021. Please refer to your benefit outline to see if this PCP/Primary Care Practitioner benefit is applicable.

Preventive services listed are covered subject to the terms and conditions set forth in your plan certificate. Preventive care services and preventive drugs include specific services and drugs ranked A or B by the U.S. Preventive Services Task Force and are subject to change.

## Telehealth services from Teladoc®

Connect with a licensed physician over the phone or via video consult 24/7/365. Behavioral health and dermatology services are also available.

- » Phone: 800-Teladoc (800-835-3262)
- » Computer: teladoc.com
- » Mobile device: Teladoc app
- » Find information at [wpshealth.com/telehealth](https://wpshealth.com/telehealth)

It's easy to set up your account by phone, website, or mobile app. Once your account is set up, provide your medical history so Teladoc doctors have the information they need to make an accurate diagnosis. Then, you're ready to request a consult anytime you need care.

## EyeMed vision care discount<sup>2</sup>

- » Access to discounts on eye care and eyewear is included with your health plan—use discount number 9238064 for WPS Health Plan plans
- » Thousands of locations nationwide
- » Call EyeMed toll-free at 866-559-5252



## Hear In America hearing plans<sup>2</sup>

- » Includes an annual hearing screening at no cost
- » Discounts on nine top hearing aid brands
- » Three-year warranties covering repairs, loss, and damage are included with all purchases
- » Three years of office service included (clean, check, adjust)
- » Three years of hearing aid batteries included
- » Coverage is also available for other family members
- » To take advantage of this offer, call Hear In America at 800-286-6149 and say you are a WPS customer

<sup>2</sup>Vision and hearing programs are not part of the insurance policy and are offered at no additional charge for membership. Enrollment in these programs is subject to contract renewal.

# Pharmacy benefits

## Prescription drug coverage

We partner with Express Scripts® to provide you with top-tier pharmacy benefits and service.

- » **\$0 copay** on select preventive drugs for common conditions<sup>3</sup> (e.g., high blood pressure, high cholesterol, heart conditions, diabetes, asthma)
- » Keep your costs down with lower-cost generic drugs
- » Convenient home delivery service is available
- » Visit **wpshealth.com** and click **Customers**, then **Pharmacy Information**

## Express Scripts® home delivery is easy, safe, and convenient

You can get up to a 90-day supply of your medicine for a single home delivery copayment by using home delivery for the prescriptions you take regularly. This valuable part of your prescription benefit includes FREE standard shipping. To sign up for home delivery, register at **express-scripts.com** or call Express Scripts directly at **800-698-3757**.

## Register with Express Scripts® for easy online access

You can manage your medicines anywhere, anytime with **express-scripts.com** and the Express Scripts Mobile App.

### To register:

- » Go to **express-scripts.com** and select **Register** or download the Express Scripts Mobile App for free from your mobile device's app store and select **Register**
- » Complete the information requested, including personal information and member ID number or Social Security Number (SSN), create your user name and password, and add security information in case you ever forget your password
- » Click **Register** and you're registered
- » On the final page, you can set preferences now (including the option to share your prescription information with other adult members of your household (age 18+) covered under your prescription drug plan), or later in **My Account** on **express-scripts.com**
- » Click **Continue**

## Express Scripts Mobile App adds convenience

Once you're registered, you can take advantage of the Express Scripts Mobile App, which lets you manage your medications anytime, anywhere!

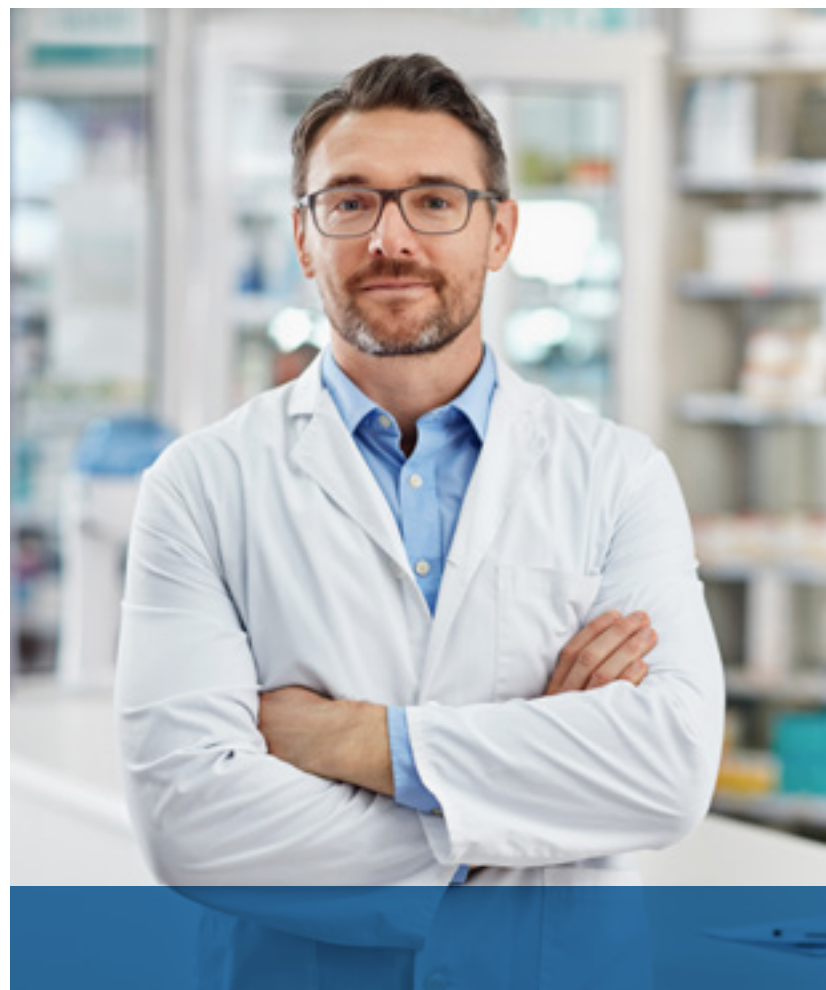
- » Save time and money with home delivery
- » Find and compare prices with **Price a Medication** and **My Rx Choices**®
- » Refill and renew your prescriptions
- » Check for drug interactions and sign up for medicine alerts
- » See your order status, claims, and payment history

Go to **express-scripts.com/mobileapp** to learn more.

## Drug prior authorization

Prior authorization is required for some drugs to ensure they're used appropriately. Decisions are based on medical records, FDA-approved labeling, published and peer-reviewed scientific literature, and evidence-based guidelines.

- » Visit **wpshealth.com**, look under **Resources** and select **My Benefits** under the **Customer Resources** heading. Click on **Pharmacy Information**, then click on the link for the **WPS Drug Prior Authorization List**.



<sup>3</sup>Preventive Drugs include specific supplements, contraceptives, immunizations, and otherwise preventive drugs ranked A or B by the U.S. Preventive Services Task Force.

# Large Group \$0 Drug List

**NOTE:** For plans having a prescription drug copay (not HSA-qualified), all drugs listed are a \$0 copay. For HSA-qualified plans, only the drugs highlighted in blue are \$0/first dollar (as preventive) due to IRS regulations. The others listed would be subject to deductible/coinsurance. Not all forms or strengths of a listed drug may be covered at \$0. This list is subject to change.

CARDIOVASCULAR			
Chapter name	Drug name		
Antiarrhythmic agents	Amiodarone	Disopyramide phosphate	Flecainide acetate
	Mexiletine HCL	Pacerone	Procainamide HCL
	Propafenone HCL	Propafenone HCL ER	Quinidine gluconate
	Quinidine sulfate	Sorine	Sotalol HCL
	Sotalol HCL AF	—	—
Cardiac glycosides	Digoxin	—	—
Nitrates	Isosorbide dinitrate	Isosorbide mononitrate	Nitroglycerin SR
Anticoagulant agents	Warfarin sodium	Jantoven	—
Antiplatelet drugs	Cilostazol	Clopidogrel	Dipyridamole
	Ticlopidine	—	—
Thiazide and related diuretics	Amiloride HCL	Amiloride HCL/Hydrochlorothiazide	Bumetanide
	Chlorothiazide	Chlorthalidone	Eplerenone
	Furosemide	Hydrochlorothiazide	Indapamide
	Methyclothiazide	Metolazone	Spironolactone
	Spironolactone/Hydrochlorothiazide	Torsemide	Triamterene/Hydrochlorothiazide
Beta blockers	Acebutolol HCL	Atenolol	Betaxolol HCL
	Bisoprolol fumerate	Carvedilol	Labetalol HCL
	Metoprolol succinate	Metoprolol tartrate	Nadolol
	Pindolol	Propranolol	Propranolol LA
	Propranolol XL	Timolol maleate	—
Calcium channel blockers	Amlodipine besylate	Cartia XT	Diltiazem HCL
	Diltiazem HCL CD	Diltiazem HCL SR	Diltiazem HCL, sustained release
	Felodipine ER	Isradipine	Matzim LA
	Nicardipine	Nifedipine	Nifedipine XL
	Nimodipine	Nisoldipine	Taztia XT
	Verapamil HCL	Verapamil HCL PM	Verapamil HCL SR
	Verapamil HCL, 24 hour	—	—
ACE inhibitors	Benazepril HCL	Captopril	Enalapril maleate
	Fosinopril sodium	Lisinopril	Moexipril HCL
	Perindopril	Quinapril HCL	Ramipril
	Trandolapril	—	—
Adrenergic antagonists and related drugs	Clonidine HCL	Clonidine HCL patch	Doxazosin mesylate
	Clonidine HCL ER	Guanfacine HCL	Methyldopa
	Prazosin HCL	Guanfacine HCL ER	Terazosin
Other antihypertensive combinations	Amlodipine besylate/Benazepril HCL	Atenolol/Chlorthalidone	Benazepril HCL/Hydrochlorothiazide
	Bisoprolol fumerate/ Hydrochlorothiazide	Captopril/Hydrochlorothiazide	Enalapril maleate/ Hydrochlorothiazide
	Fosinopril sodium/ Hydrochlorothiazide	Lisinopril/Hydrochlorothiazide	Methyldopa/Hydrochlorothiazide
	Metoprolol tartrate/ Hydrochlorothiazide	Moexipril HCL/Hydrochlorothiazide	Propranolol HCL/ Hydrochlorothiazide
	Quinapril HCL/Hydrochlorothiazide	Trandolapril/Verapamil	—

Not all forms or strengths of a listed drug may be covered at \$0. This list is subject to change.

CARDIOVASCULAR			
Chapter name	Drug name		
Angiotensin II receptor blockers and renin inhibitors	Candesartan	Candesartan/Hydrochlorothiazide	Eprosartan
	Irbesartan	Irbesartan/Hydrochlorothiazide	Losartan potassium
	Losartan potassium/Hydrochlorothiazide	Telmisartan	Valsartan
	Valsartan/Hydrochlorothiazide	—	—
Lipid/cholesterol lowering agents	Amlodipine besylate/Atorvastatin	Atorvastatin	Cholestyramine light
	Cholestyramine	Colestipol	Fenofibrate
	Fenofibric acid	Fluvastatin	Gemfibrozil
	Lovastatin	Niacin	Pravastatin
	Simvastatin	—	—
Potassium	Potassium bicarbonate/Citric acid	Potassium chloride	Potassium chloride cap
	Potassium chloride liquid	Potassium chloride packet	Potassium chloride sustained
	Potassium chloride/Potassium bicarbonate/Citric acid	—	—
DIABETES			
Chapter name	Drug name		
Non-insulin oral hypoglycemic agents	Acarbose	—	Chlorpropamide
	Glimepiride	Glipizide	Glipizide ER
	Glipizide XL	Glipizide/Metformin	Glyburide
	Glyburide/Metformin	Glyburide, micronized	Metformin
	Metformin ER	Nateglinide	Pioglitazone
	Pioglitazone/Metformin	Repaglinide	Tolazamide
	Tolbutamide	—	—
Insulins	Humalog	Humalog mix	Humulin 50-50
	Humulin 70-30	Humulin N	Humulin R
	Lantus	Lantus Solostar	Levemir
	Toujeo Solostar	—	—
Non-insulin injectable hypoglycemic agents	Adlyxin	Bydureon	Byetta
	SymlinPen	—	—
RESPIRATORY			
Chapter name	Drug name		
Xanthines	Aminophylline	Theophylline anhydrous	Elixophylline
Beta agonist oral	Albuterol sulfate	Metaproterenol sulfate	Terbutaline sulfate
Beta agonist inhalers	Albuterol	Albuterol sulfate	Arcapta Neohaler
	Levalbuterol	Foradil	Perforomist
	Serevent Diskus	—	—
Inhaled steroids	Budesonide	Asmanex	Asmanex HFA
	Pulmicort Flexhaler	Qvar	—
Miscellaneous pulmonary agents	Acetylcysteine	Cromolyn sodium ampules	Ipratropium/Albuterol sulfate
	Ipratropium bromide solution	Montelukast	Zafirlukast
	Advair Diskus	Atrovent HFA	Combivent
	Advair HFA	—	—
	Dulera	Incruse Ellipta	Spiriva
Nasal Steroids	Symbicort	Tudorza Pressair	—
	Mometasone Furoate	—	—
MENTAL HEALTH			
Chapter name	Drug name		
Selective Serotonin Reuptake Inhibitors	Citalopram	Escitalopram	Fluoxetine
	Fluvoxamine	Paroxetine	Sertraline

Not all forms or strengths of a listed drug may be covered at \$0. This list is subject to change.





# Fitness programs help you stay in shape

You could keep paying for your gym membership like everyone else, or you could sign up and let us help you pay the tab. Through our partnership with American Specialty Health Incorporated, WPS Health Plan offers a fitness reimbursement program for all group health plan customers.

The program is designed to pay you back for going to the gym. It also serves as an incentive to help you stay active. Get reimbursed for going to your favorite fitness center and get the benefits of exercise: less stress, weight control, and stronger muscles and bones. All you have to do is sign up!

## ExerciseRewards™ program\*

- » Work out at least 10 times per month at a qualified fitness center and receive a \$30 reward!
- » Online fitness center search lets you find a participating facility near you
- » Track your visits and redeem your rewards online
- » From the **wpshealth.com** home page, click on the **Customers** link and then log in to your **WPS Health Plan** customer account for information
- » For a list of participating fitness centers, please visit **exerciserewards.com** and click on **Find A Fitness Center**

## Active&Fit™ Direct program\*

- » Get access to a fitness center for a low monthly fee plus applicable taxes
- » Choose from more than 10,000 participating locations nationwide
- » Get started with a low enrollment fee, a low monthly fee, and any applicable taxes. Visit **activeandfitdirect.com/faq** for current pricing information.
- » From the **wpshealth.com** home page, click on the **Customers** link and then log in to your **WPS Health Plan** customer account and click on the **Active&Fit Direct** link that applies to you

\*The ExerciseRewards and Active&Fit Direct programs are provided by American Specialty Health Fitness, Inc., a subsidiary of American Specialty Health Incorporated (ASH). ExerciseRewards and Active&Fit Direct are trademarks of ASH. The ExerciseRewards program is a health improvement and education program and is not insurance. Fitness discount program is not part of the insurance policy and is offered at no additional charge. Enrollment in this program is subject to contract renewal. If you think an employee might be unable to meet a standard for a reward under this wellness program, the employee might qualify for an opportunity to earn the same reward by different means. Please see the **Customers** link for more information.



## Helpful Tips for Prior Authorization

Before requesting prior authorization, review your health plan for specific authorization requirements, excluded services/treatments, and referral requirements.

### Prior authorization is required for inpatient admissions:

- » **Different standards apply depending on whether the admission is elective or acute.**
  - **Elective admissions:** Your health care provider must submit a prior authorization request a minimum of three (3) days prior to an elective (nonemergency) admission.
  - **Acute admissions:** You or the facility must notify WPS Health Plan in writing or by phone within two (2) days of an acute (direct or emergency) admission. Use the number on your customer ID card or the Customer Service number: 800-223-6029.
- » **Inpatient admissions include** your admission to an inpatient hospital, hospice inpatient facility, inpatient rehabilitation facility, skilled nursing facility (when Medicare is not primary), or an inpatient and residential facility for behavioral health services.

Prior authorization is also required for:

- » All **nonemergency ambulance transfers** between facilities.
- » Certain high-technology imaging including, but not limited to, MRIs, PET scans, and CT scans.
- » Any service, procedure, or equipment on the Prior Authorization List found at [wpshealth.com](https://wpshealth.com). Click **Customers**, then click on **My Account Information**, then **Forms and Documents**. On that page, use the tip-down menu for **Prior Authorization Forms & Documents** to select the information you need.

Please share this information with your health care provider, who can submit the Prior Authorization Form and your relevant clinical information directly to us.

### Drug prior authorization

Prior authorization is required for some drugs to ensure they're used appropriately. Decisions are based on medical records, FDA-approved labeling, published and peer-reviewed scientific literature, and evidence-based guidelines.

Visit [wpshealth.com](https://wpshealth.com), click **Customers**, then **Pharmacy Information** for information on drug tiers, how to obtain prior authorization, and to view the drug formulary, which lists all of the drugs covered by your health plan.



### Care Management

Our case managers are dedicated to hearing your story while assisting you with your health care needs. Case managers are registered nurses who can help you by:

- » Coordinating your health care
- » Assisting you with navigation through a complex health care system
- » Providing education specific to your health care needs and concerns
- » Supporting you and acting as an advocate for you to improve your health care experience and outcomes
- » Helping you reach your health care goals
- » Learning about available community resources
- » Understanding your health insurance benefits

### Helping you become a better health care consumer

You may receive an introductory phone call and letter from a WPS case manager offering services to you following a hospitalization or illness. Or you can begin case management by calling WPS at 800-333-5003 and asking to speak to a case manager. Or visit [wpshealth.com/case-management](https://wpshealth.com/case-management).

## Questions?

You or your health care providers can contact WPS Health Plan with any questions regarding prior authorizations using the contact information found on your customer ID card.

If your customer ID card is unavailable, contact Customer Service at **800-223-6029**.

## Online Customer Resources

### Convenient access to tools and resources for your best health

- » View your medical prior authorizations
- » Access health and wellness information
- » Locate in-network doctors and facilities
- » Order prescriptions through Express Scripts®
- » Manage your account
- » Learn about your benefits
- » Check your claims processing status
- » Find answers to common questions

## Managing Your Online Customer Account is Easier than Ever

### How to register and access your information

Make sure you have your WPS ID card handy.

1. Visit **wpshealth.com**, click **Customers**, and then click **Register**
2. Enter the requested policy information from your ID card on the registration form
3. Create a user ID and easy-to-remember password, and establish your security questions/answers
4. Read the Privacy Policy and, if you agree, check the **I understand and agree** box at the bottom of the page and then click the **Register** button

### Log in anytime to:

- » Access Explanation of Benefits (EOB) and policy materials
- » Check claims processing status
- » Find in-network providers
- » Verify plan benefits
- » Check deductibles and out-of-pocket amounts
- » Print or order replacement ID cards
- » Check the status of your medical prior authorizations

**NOTE:** You'll be unable to register and access your online customer account until after your health plan effective date.

### How to navigate the site

The online customer account offers access to everything you need, all in one place. This allows more flexibility and control in managing your personal account information. Clearly labeled tabs take you straight to what matters to you most, whether it's your policy, billing information, claims status, EOBs, or other important documents.

### How to find a doctor

At the top of the home page, click on **Find A Doctor**. Select to Start Your Search under **WPS Health Plan**. In the Visitors' search, select the **WPS Select Plus** network and click **I Agree**. When you receive your customer ID card, you can enter your group number and click **Go**.

### How to use the Health Center

The online WPS Health Plan Self-Management Tool provides information, tools, and support you need to achieve your best health, including:

- » The Healthwise® Knowledgebase, an online health encyclopedia providing information on thousands of topics
- » A wealth of tools designed to help you make wise health decisions
- » Healthy Living and Chronic Care Centers that provide guidance to help you manage common health risks and chronic conditions
- » Information about health club discounts and other incentives for healthy choices
- » The Patient Safety page provides links to hospital quality and safety data to help you choose providers who deliver high-quality clinical outcomes
- » **FREE** newsletters to help keep you and your family healthy and get the most from your health plan

### Visit the Health Center

Go to **wpshealth.com** and click on **Resources**, then **Wellness** to access our online Health Center.

## Questions?

If you need additional help or don't have internet access, please call Customer Service at **800-223-6029**, Monday through Friday, 7:30 a.m.–5 p.m.



A low-angle, blue-tinted photograph of three construction workers on a scaffolding. The workers are wearing hard hats and safety harnesses. One worker is in the foreground, seen from the back, looking towards the other two workers who are slightly behind him. They appear to be in conversation. The scaffolding structure is complex, with many vertical and horizontal metal poles and cross-braces.

For nearly

# 75 years,

WPS Health Solutions has served the people of Wisconsin—and beyond. Today WPS Health Plan, a subsidiary of WPS based in Wisconsin, offers high-quality coverage and networks, affordable plans, and a wide range of group health plan choices to protect your health. WPS Health Solutions has been recognized by the Ethisphere® Institute as one of the World's Most Ethical Companies® 10 times.<sup>1</sup>

<sup>1</sup>2010-2019 World's Most Ethical Companies®, Ethisphere® Institute, [worldsmoethicalcompanies.com/past-honorees/](https://worldsmoethicalcompanies.com/past-honorees/)





## Choose WPS

WPS Health Plan offers top-quality benefits and coverage you can depend on. Take advantage of your health coverage to live a healthier, more productive life.

## Questions?



Visit [wpshealth.com/healthplan](https://wpshealth.com/healthplan) and click on the **Customers** link.



Call **800-223-6029**  
Monday–Friday, 7:30 a.m.–5 p.m. CT



Health insurance partner  
of the Green Bay Packers



Proud partner of the  
Milwaukee Brewers™

**WPS**®

**HEALTH  
PLAN**

Green Bay Packers and Milwaukee Brewers™ partnerships are paid endorsements.