



WPS Group Health Insurance



Proud partner of the
Green Bay Packers

WPS

**HEALTH
INSURANCE**

What can you count on from WPS Health Insurance?

High-quality plans and personal service

for the health coverage you need to stay well and help managing your out-of-pocket costs.

LOCAL. HONEST. INDEPENDENT.

In Wisconsin

WPS Statewide Network

Convenient access to thousands of health care professional service locations and hospitals throughout the state.

More than

25,000

health care professional service locations

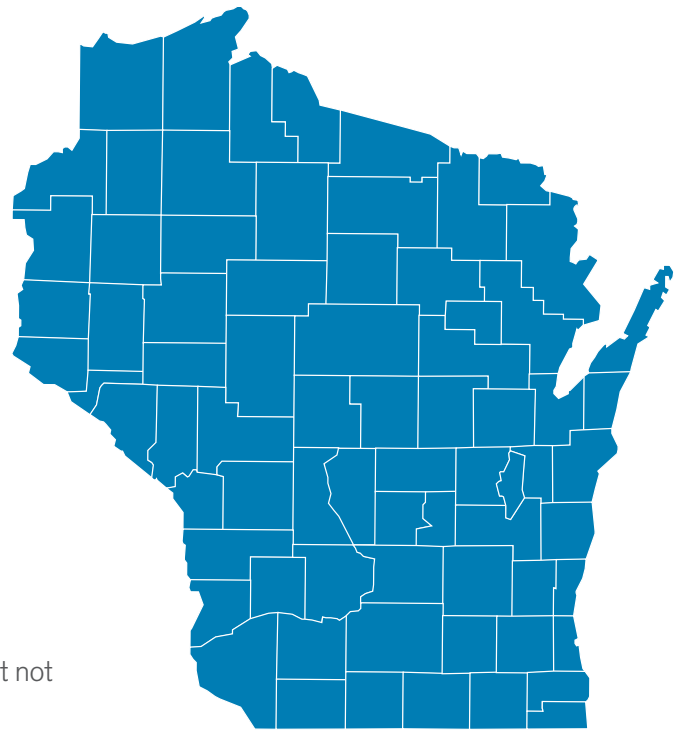
165

 hospitals

Top providers

You have easy access to health care throughout the state, including, but not limited to, the following providers and systems:

- » Ascension Wisconsin
- » Aspirus Network, Inc.
- » Aurora Health Care
- » Bellin Health
- » Children's Hospital of Wisconsin
- » Essentia Health
- » Froedtert & Medical College of Wisconsin
- » Gundersen Health System
- » Holy Family Memorial
- » Hospital Sisters Health System
- » Marshfield Clinic
- » Mayo Clinic Health System
- » OakLeaf Medical Network
- » ProHealth
- » SSM Health, encompassing Dean Medical Group; St. Mary's Hospitals in Madison, Janesville, and Baraboo; Agnesian Healthcare; and Monroe Medical Center
- » ThedaCare
- » University of Wisconsin Hospital and Clinics



■ WPS Statewide Network

Providers can leave or enter the network at any time. It is recommended that you check the network status of your provider on a regular basis.



800-223-6048
Monday through Friday
7:30 a.m.–5 p.m.



WPS Health Insurance
1717 W. Broadway
P.O. Box 8190
Madison, WI 53708-8190



For questions about your coverage or claims, please log in to your customer account for secure communications.
wpshealth.com

Across the U.S.

First Health

In-network benefits in all 49 states outside Wisconsin.

More than

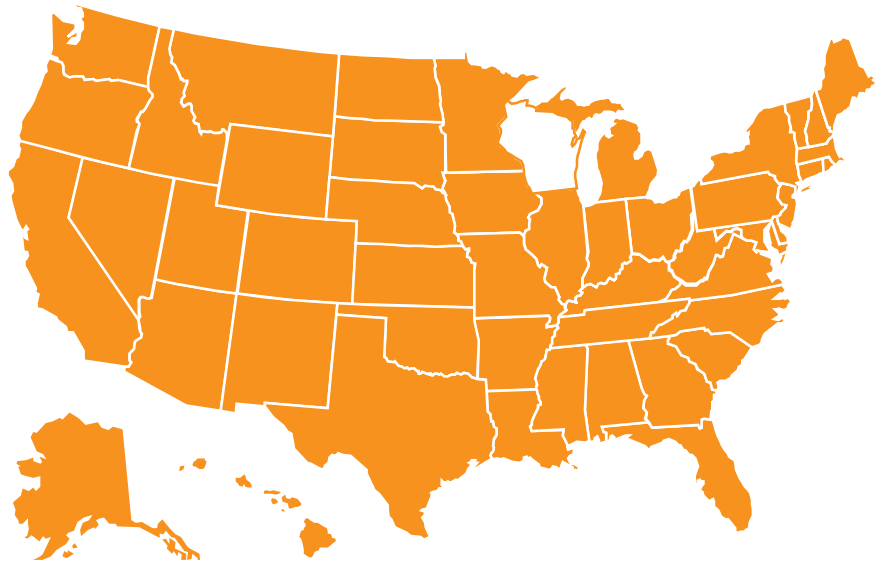
1 million

health care service locations

6,000 hospitals

130,000

ancillary facilities



■ First Health

Providers can leave or enter the network at any time. It is recommended that you check the network status of your provider on a regular basis.

Finding an in-network provider is easy!

Visit wpshealth.com and click on **Find a Doctor**. To locate an in-network provider near you, choose the **Open Enrollee or Visitor** option, select the appropriate network from the network drop-down menu, enter your ZIP code, and follow the prompts. If you reside in Wisconsin, Statewide is your primary network. Once you are enrolled, you may select **Existing Subscriber** and enter your Subscriber number from your ID card to begin your search.

You also can call Customer Service at the number on your WPS ID card, Monday–Friday, 7:30 a.m. to 5 p.m. CT.

Benefits for your health

Covered preventive care

Group plans cover 100% of certain preventive services and medications when care is received from an in-network health care provider. Services received from an out-of-network provider are subject to out-of-pocket costs, such as copayments, deductibles, and coinsurance amounts or are not covered, depending on the health plan selected.

Covered services include:

- » Routine immunizations
- » Routine medical exams
- » Well-child care
- » Mammograms
- » Preventive screenings
- » Preventive drugs¹
- » Smoking cessation
- » Three **FREE** primary care visits per calendar year²

²Benefit does not apply to HSA-qualified HDHPs or nonstandard copay plans. Three free primary care visits are applicable to new WPS policies effective Jan. 1, 2021, or later. The primary physician office copay charge is waived for each covered family member, up to three visits per calendar year. Please refer to your proposal benefit outline to see if this primary care practitioner benefit is applicable.

Preventive services listed are covered subject to the terms and conditions set forth in your plan certificate. Age-appropriate screenings are set by the U.S. Preventive care services and preventive drugs include specific services and drugs ranked A or B by the U. S. Preventive Services Task Force and are subject to change.

Telehealth services from Teladoc[®]

Connect with a licensed physician over the phone or via video consult 24/7/365. Dermatology services are also available, and behavioral health services for customers age 18 and above.

- » Phone: 800-Teladoc (800-835-2362)
- » Computer: teladoc.com
- » Mobile device: Teladoc app
- » Find information at wpshealth.com/telehealth

It's easy to set up your account by phone, website, or mobile app. Once your account is set up, provide your medical history so Teladoc doctors have the information they need to make an accurate diagnosis. Then, you're ready to request a consult anytime you need care.

EyeMed vision care discount³

- » Access to discounts on eye care and eyewear is included with your health plan—use discount number 9238049 for WPS Health Insurance plans
- » Thousands of locations nationwide; to find a participating location, go to eyemed.com, click on **Find an eye doctor**, enter your ZIP code, and select **Access** in the **Choose Network** drop-down menu
- » Call EyeMed toll-free at 866-559-5252

¹Preventive drugs include specific supplements, contraceptives, immunizations, and otherwise preventive drugs ranked A or B by the U.S. Preventive Services Task Force. ³Vision and hearing programs are not part of the insurance policy and are offered at no additional charge for membership. Enrollment in these programs is subject to contract renewal.



Hearing Care Solutions hearing plans³

- » Comprehensive hearing exam at no charge
- » Hearing aid evaluation at no charge
- » Fixed, discounted pricing at multiple levels of technology
- » A wide selection of fully digital instruments, starting at \$500 per device
- » Choice of up to nine major manufacturers
- » Hearing aid fitting at no charge
- » 3-year manufacturer's warranty, including loss, damage, and repair
- » 3-year supply of hearing aid batteries for non-rechargeable devices
- » Access to a doctor of audiology and product specialists to respond to questions
- » Choice of more than 5,000 locations nationwide
- » To get started, call 844-203-4870, M-F, 7 a.m. to 7 p.m. CT, or visit hearingcaresolutions.com/wpsgroup

Pharmacy benefits

Prescription drug coverage

We partner with Express Scripts® to provide you with top-tier pharmacy benefits and service.

- » **\$0 copay** on select preventive drugs for common conditions¹ (e.g., high blood pressure, high cholesterol, heart conditions, diabetes, asthma)
- » Keep your costs down with lower-cost generic drugs
- » Convenient home delivery service is available
- » Visit [wpshealth.com](https://www.wpshealth.com) and click **Customers**, then **Pharmacy Information**

Express Scripts and Propeller Pulmonary Care program⁴

- » Helps customers manage asthma and chronic obstructive pulmonary disease (COPD)
- » Propeller sensors attach to inhalers and collect information about medication use
- » Data is sent wirelessly to a smartphone app, which learns the user's symptoms and medication use patterns to build a personalized profile
- » Actionable information helps customers better manage their condition
- » The app provides medication reminders, tracks medication use, gives a daily forecast, provides monthly and weekly summary reports, and can help users find a lost inhaler

Express Scripts® home delivery is easy, safe, and convenient

You can get up to a 90-day supply of your medicine by using home delivery for the prescriptions you take regularly. This valuable part of your prescription benefit includes FREE standard shipping. To sign up for home delivery, register at [express-scripts.com](https://www.express-scripts.com) or call Express Scripts directly at **800-698-3757**.

Register with Express Scripts® for easy online access

You can manage your medicines anywhere, anytime with [express-scripts.com](https://www.express-scripts.com) and the Express Scripts Mobile App.

To register:

- » Go to [express-scripts.com](https://www.express-scripts.com) and select **Register** or download the Express Scripts Mobile App for free from your mobile device's app store and select **Register**
- » Complete the information requested, including personal information and member ID number or Social Security Number (SSN), create your user name and password, and add security information in case you ever forget your password

- » Click **Register** and you're registered
- » On the final page, you can set preferences now (including the option to share your prescription information with other adult members of your household (age 18+) covered under your prescription drug plan), or later in **My Account** on [express-scripts.com](https://www.express-scripts.com)
- » Click **Continue**

Express Scripts Mobile App adds convenience

Once you're registered, you can take advantage of the Express Scripts Mobile App, which lets you manage your medications anytime, anywhere!

- » Save time and money with home delivery
- » Find and compare prices with **Price a Medication** and **My Rx Choices**®
- » Refill and renew your prescriptions
- » Check for drug interactions and sign up for medicine alerts
- » See your order status, claims, and payment history

Go to [express-scripts.com/mobileapp](https://www.express-scripts.com/mobileapp) to learn more.

Drug prior authorization

Prior authorization is required for some drugs to ensure they're used appropriately. Decisions are based on medical records, FDA-approved labeling, published and peer-reviewed scientific literature, and evidence-based guidelines.

- » Visit [wpshealth.com](https://www.wpshealth.com), look under **Resources** and select **My Benefits** under the **Customer Resources** heading. Click on **Pharmacy Information**, then click on the link for the **WPS Drug Prior Authorization List**.



⁴Pulmonary care program is not part of the insurance policy and is offered at no additional charge for membership. Enrollment in this program is subject to contract renewal.

Large Group \$0 Drug List

NOTE: For plans having a prescription drug copay (not HSA-qualified), all drugs listed are a \$0 copay. For HSA-qualified plans, only the drugs highlighted in blue are \$0/first dollar (as preventive) due to IRS regulations. The others listed would be subject to deductible/coinsurance. Not all forms or strengths of a listed drug may be covered at \$0. This list is subject to change.

Last Revised May 11, 2022

CARDIOVASCULAR			
Chapter name	Drug name		
Antiarrhythmic agents	Amiodarone	Disopyramide phosphate	Flecainide acetate
	Mexiletine HCL	Pacerone	Procainamide HCL
	Propafenone HCL	Propafenone HCL ER	Quinidine gluconate
	Quinidine sulfate	Sorine	Sotalol HCL
	Sotalol HCL AF	—	—
Cardiac glycosides	Digoxin	—	—
Nitrates	Isosorbide dinitrate	Isosorbide mononitrate	Nitroglycerin SR
Anticoagulant agents	Warfarin sodium	Jantoven	—
Antiplatelet drugs	Cilostazol	Clopidogrel	Dipyridamole
Thiazide and related diuretics	Amiloride HCL	Amiloride HCL/Hydrochlorothiazide	Bumetanide
	Chlorthalidone	Eplerenone	Furosemide
	Hydrochlorothiazide	Indapamide	Metolazone
	Spironolactone	Spironolactone/Hydrochlorothiazide	Torsemide
	Triamterene/Hydrochlorothiazide	—	—
Beta blockers	Acebutolol HCL	Atenolol	Betaxolol HCL
	Bisoprolol fumerate	Carvedilol	Labetalol HCL
	Metoprolol succinate	Metoprolol tartrate	Nadolol
	Pindolol	Propranolol	Propranolol LA
	Propranolol XL	Timolol maleate	—
Calcium channel blockers	Amlodipine besylate	Cartia XT	Diltiazem HCL
	Diltiazem HCL CD	Diltiazem HCL SR	Diltiazem HCL, sustained release
	Felodipine ER	Isradipine	Matzim LA
	Nicardipine	Nifedipine	Nifedipine XL
	Nimodipine	Nisoldipine	Taztia XT
	Verapamil HCL	Verapamil HCL PM	Verapamil HCL SR
	Verapamil HCL, 24 hour	—	—
ACE inhibitors	Benazepril HCL	Captopril	Enalapril maleate
	Fosinopril sodium	Lisinopril	Moexipril HCL
	Perindopril	Quinapril HCL	Ramipril
	Trandolapril	—	—
Adrenergic antagonists and related drugs	Clonidine HCL	Clonidine HCL patch	Doxazosin mesylate
	Clonidine HCL ER	Guanfacine HCL	Methyldopa
	Prazosin HCL	Guanfacine HCL ER	Terazosin
Other antihypertensive combinations	Amlodipine besylate/Benazepril HCL	Atenolol/Chlorthalidone	Benazepril HCL/Hydrochlorothiazide
	Bisoprolol fumerate/Hydrochlorothiazide	Captopril/Hydrochlorothiazide	Enalapril maleate/Hydrochlorothiazide
	Fosinopril sodium/Hydrochlorothiazide	Lisinopril/Hydrochlorothiazide	Methyldopa/Hydrochlorothiazide
	Metoprolol tartrate/Hydrochlorothiazide	Propranolol HCL/Hydrochlorothiazide	Quinapril HCL/Hydrochlorothiazide
	Trandolapril/Verapamil	—	—

Not all forms or strengths of a listed drug may be covered at \$0. This list is subject to change.

CARDIOVASCULAR			
Chapter name	Drug name		
Angiotensin II receptor blockers and renin inhibitors	Candesartan	Candesartan/Hydrochlorothiazide	Eprosartan
	Irbesartan	Irbesartan/Hydrochlorothiazide	Losartan potassium
	Losartan potassium/ Hydrochlorothiazide	Telmisartan	Valsartan
	Valsartan/Hydrochlorothiazide	—	—
Lipid/cholesterol lowering agents	Amlodipine besylate/Atorvastatin	Atorvastatin	Cholestyramine light
	Cholestyramine	Colestipol	Fenofibrate
	Fenofibric acid	Fluvastatin	Gemfibrozil
	Lovastatin	Pravastatin	Simvastatin
Potassium	Potassium bicarbonate/Citric acid	Potassium chloride	Potassium chloride cap
	Potassium chloride liquid	Potassium chloride packet	Potassium chloride sustained
	Potassium chloride/Potassium bicarbonate/Citric acid	—	—
DIABETES			
Chapter name	Drug name		
Non-insulin oral hypoglycemic agents	Acarbose	Glimepiride	Glipizide
	Glipizide ER	Glipizide XL	Glipizide/Metformin
	Glyburide	Glyburide/Metformin	Glyburide, micronized
	Metformin	Metformin ER	Nateglinide
	Pioglitazone	Pioglitazone/Metformin	Repaglinide
Insulins	Humalog	Humalog mix	Humulin 70-30
	Humulin N	Humulin R	Levemir
	Semglee vials and pens	Toujeo Solostar	—
Non-insulin injectable hypoglycemic agents	Bydureon	Byetta	SymlinPen
RESPIRATORY			
Chapter name	Drug name		
Xanthines	Aminophylline	Theophylline anhydrous	—
Beta agonist oral	Albuterol sulfate	Metaproterenol sulfate	Terbutaline sulfate
Beta agonist inhalers	Albuterol	Albuterol sulfate	Levalbuterol
	Serevent Diskus	—	—
Inhaled steroids	Asmanex	Asmanex HFA	Budesonide
	Qvar Redihaler	—	—
Miscellaneous pulmonary agents	Acetylcysteine	Advair HFA	Atrovent HFA
	Combivent	Cromolyn sodium ampules	Dulera
	Fluticasone-Salmeterol	Ipratropium/Albuterol sulfate	Ipratropium bromide solution
	Incruse Ellipta	Montelukast	Wixela Inhub
	Spiriva	Symbicort	Zafirlukast
Nasal Steroids	Mometasone Furoate	—	—
MENTAL HEALTH			
Chapter name	Drug name		
Selective Serotonin Reuptake Inhibitors	Citalopram	Escitalopram	Fluoxetine
	Fluvoxamine	Paroxetine	Sertraline

Not all forms or strengths of a listed drug may be covered at \$0. This list is subject to change.

Helpful tips for prior authorization

Before requesting prior authorization, review your health plan for specific authorization requirements, excluded services/treatments, and referral requirements.

Prior authorization is required for inpatient admissions:

- » **Different standards apply depending on whether the admission is elective or acute.**
 - **Elective admissions:** Your health care provider must submit a prior authorization request a minimum of three (3) days prior to an elective (non-emergency) admission.
 - **Acute admissions:** You or the facility must notify WPS in writing or by phone within two (2) days of an acute (direct or emergency) admission. Use the number on your customer ID card or the Customer Service number: 800-223-6048.
- » **Inpatient admissions include** your admission to an inpatient hospital, hospice inpatient facility, inpatient rehabilitation facility, skilled nursing facility when Medicare is not primary, or an inpatient and residential facility for behavioral health services.

Prior authorization is required for:

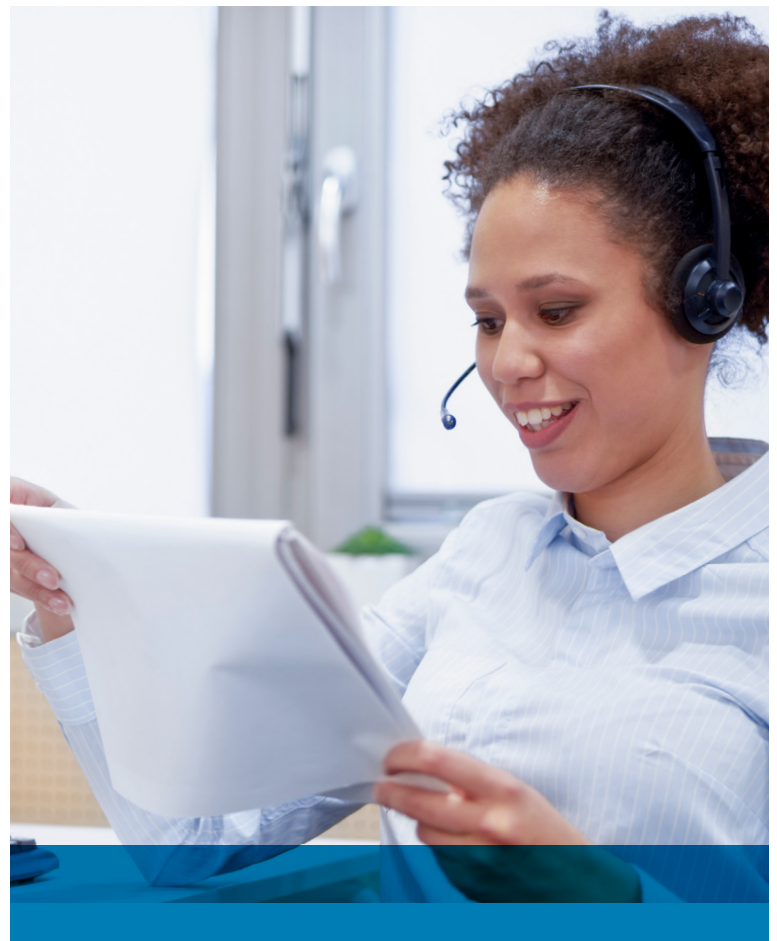
- » All *nonemergency ambulance transfers* between facilities.
- » Certain high-cost imaging including, but not limited to, MRI, PET, and CT scans.
- » Any service, procedure, or equipment on the Prior Authorization List found at wpshealth.com—click **Customers» My Account Information» Forms and Documents**. On that page, select **Prior Authorization Forms & Documents** for links to the lists and more.

Please share this information with your health care provider, who can submit the Prior Authorization Form and your relevant clinical information directly to us.

Drug prior authorization

Prior authorization is required for some drugs to ensure they're used appropriately. Decisions are based on medical records, FDA-approved labeling, published and peer-reviewed scientific literature, and evidence-based guidelines.

Visit wpshealth.com, click **Customers**, then select **Pharmacy Information** for access to a list of drugs that require prior authorization, instructions on how to obtain prior authorization, and a guide to drugs that are preferred by your health plan and offered at lower copay levels.



Care Management program

Our case managers are dedicated to hearing your story while assisting you with your health care needs. Case managers are registered nurses who can help you by:

- » Coordinating your health care
- » Assisting you with navigation of the complex health care system
- » Providing education specific to your health care needs and concerns
- » Supporting you and acting as an advocate for you to improve your health care experiences and outcomes
- » Helping you reach your health care goals
- » Learning about available community resources
- » Understanding your health insurance benefits
- » Helping you become a better health care consumer

You may receive an introductory phone call and letter from a WPS case manager offering services to you following a hospitalization or illness. Or you can begin case management by calling **WPS** at **800-333-5003** and asking to speak to a case manager. Or visit wpshealth.com/case-management.

Questions?

You or your health care providers can contact WPS with any questions regarding prior authorizations using the contact information found on your customer ID card.

If your customer ID card is unavailable, contact Customer Service at **800-223-6048**.



Fitness programs help you stay in shape

You could keep paying for your gym membership like everyone else, or you could sign up and let us help you pay the tab. Through our partnership with American Specialty Health Incorporated, WPS Health Insurance offers a fitness reimbursement program for all group health plan customers.

The program is designed to pay you back for going to the gym. It also serves as an incentive to help you stay active. Get reimbursed for going to your favorite fitness center and get the benefits of exercise: less stress, weight control, and stronger muscles and bones. All you have to do is sign up! For a list of participating fitness centers, please visit [ActiveandFit.com](https://www.activeandfit.com) and find the **Fitness Center** searchable directory

Active&Fit ExerciseRewards™ program*

- » Work out at least 10 times per month at a qualified fitness center and receive a \$30 reward!
- » Available to all covered family members ages 18 and older
- » Online fitness center search lets you find a participating location near you
- » Track your visits and redeem your rewards online
- » From the [wpshealth.com](https://www.wpshealth.com) home page, click on the **Customers** link and then log in to your account for information

Active&Fit Direct™ program*

- » Get access to a fitness center for a low monthly fee plus applicable taxes
- » Choose from more than 11,000 participating locations nationwide
- » Select from more than 5,000 premium fitness centers and exercise studios
- » Get started with a low enrollment fee, a low monthly fee, and any applicable taxes. Visit [activeandfitdirect.com/faq](https://www.activeandfitdirect.com/faq) for current pricing information.
- » From the [wpshealth.com](https://www.wpshealth.com) home page, click on the **Customers** link, then log in to your account and click on the Active&Fit Direct link that applies to you

*The Active&Fit ExerciseRewards and Active&Fit Direct programs are provided by American Specialty Health Fitness, Inc., a subsidiary of American Specialty Health Incorporated (ASH). Active&Fit ExerciseRewards and Active&Fit Direct are trademarks of ASH. The Active&Fit ExerciseRewards program is a health improvement and education program and is not insurance. Fitness discount program is not part of the insurance policy and is offered at no additional charge. Enrollment in this program is subject to contract renewal. If you think an employee might be unable to meet a standard for a reward under this wellness program, the employee might qualify for an opportunity to earn the same reward by different means. Please see the **Customers** link for more information.

Online customer resources

Convenient access to tools and resources for your best health

- » Access health and wellness information
- » Locate in-network doctors and facilities
- » Order prescriptions through Express Scripts®
- » Manage your account
- » Learn about your benefits
- » Check your claims processing status
- » Find answers to common questions
- » View your medical prior authorizations

Managing your online customer account is easier than ever

How to register and access your information

Make sure you have your WPS ID card handy

1. Visit wpshealth.com, click **Customers**, select **Group Health Customer**, and then click **Register**
2. Enter the requested policy information from your ID card on the registration form
3. Create a user ID and easy-to-remember password, and establish your security questions/answers
4. Read the Privacy Policy and, if you agree, check the **I understand and agree** box at the bottom of the page and then click the **Register** button

Log in anytime to:

- » Access Explanation of Benefits (EOB) and policy materials
- » Check claims processing status
- » Find in-network providers
- » Verify plan benefits
- » Check deductibles and out-of-pocket payments
- » Print or order replacement ID cards

NOTE: You're not able to register and access your online customer account until after your health plan effective date.

How to navigate the site

The online customer account offers access to everything you need, all in one place. This allows more flexibility and control in managing your personal account information. Clearly labeled tabs take you straight to what matters to you most, whether it's your policy, claims status, EOBs, or other important documents.

How to find a doctor

At the top of the homepage, click the **Find a Doctor** link. On the next page, select **Existing Subscriber** and then enter your information and search criteria to access a complete list of available in-network providers. If you have not yet received your WPS customer ID card, you may use the **Open Enrollee or Visitor** option.

How to use the WPS Health Center

The online WPS Health Center provides information, tools, and support you need to achieve your best health, including:

- » The Healthwise® Knowledgebase, an online health encyclopedia providing information on thousands of topics
- » A wealth of tools designed to help you make wise health decisions
- » Healthy Living and Chronic Care Centers that provide guidance to help you manage common health risks and chronic conditions
- » Information about health club discounts and other incentives for healthy choices
- » The Patient Safety page provides links to hospital quality and safety data to help you choose providers who deliver high-quality clinical outcomes
- » **FREE** newsletters to help keep you and your family healthy and get the most from your health plan

Visit the Health Center

Go to wpshealth.com and click on **Resources**, then **Wellness** to access our online Health Center.

Questions?

If you need additional help or don't have internet access, please call Customer Service at **800-223-6048**, Monday through Friday, 7:30 a.m.–5 p.m.





For more than

75 years,

WPS Health Insurance has been serving the people of Wisconsin—and beyond. Today WPS, a leading not-for-profit health insurer based in Wisconsin, offers high-quality coverage and networks, affordable plans, and a wide range of benefit choices, so you can protect your health.

- » Comprehensive, cost-effective networks locally and nationwide
- » Help managing your health care
- » Local service
- » Ethical business practices
- » Independent and on your side

Local.

Based in Madison,
covering all of Wisconsin.

Honest.

Committed to maintaining the
highest ethical standards.

Independent.

Working for you for more than
75 years.



Have a
Question?



Monday–Friday,
7:30 a.m.–5 p.m. CT



Call 800-223-6048



Visit wpshealth.com



Proud partner of the
Milwaukee Brewers™

Green Bay Packers and Milwaukee Brewers™ partnerships are paid endorsements.

WPS | HEALTH
INSURANCE

©2022 Wisconsin Physicians Service Insurance Corporation. All rights reserved. JO23071

30727-100-2206

WPS | HEALTH
INSURANCE